



OPEN ART STUDIO

SUPPLIES

- Chicken Wire Box
- Chicken Wire Door Frame
- Sandpaper & Block
- Chalk & Acrylic Paint & Brushes
- Varnish of your choice
- Wood Stain of your choice
- Hammer & Nails
- Embellishments
- Glue Gun & Glue
- Damp Paper Towel

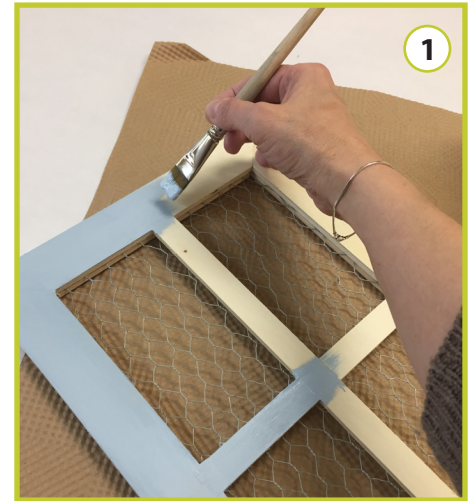


A fun part to the project is picking out your supplies! Feel free to look through everything we have and pick exactly what you'd like!

How to paint a Rustic Shelf

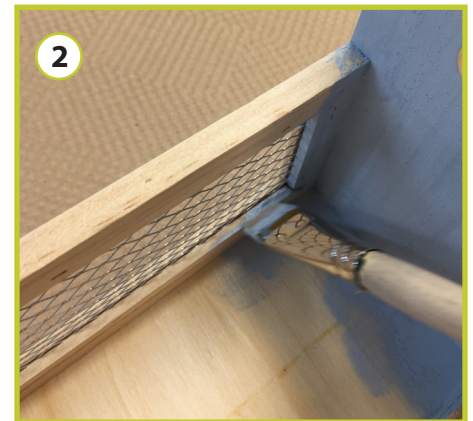


This project was inspired by MORENA's tutorial on Darice's Craft Blog.

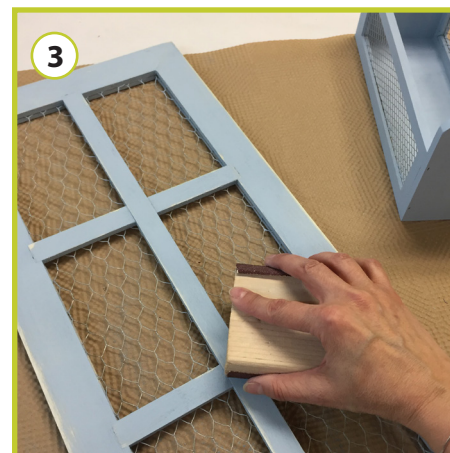


If there are rough spots on the box, take a sanding block and lightly sand the wood. Take a damp paper towel and lightly wipe off any dust that may be on the box. Also wipe up any dust that may be in your work space as you don't want that to stick to your paint.

You're ready to paint (Figure 1) You'll want to paint both the box and the frame. Make sure to paint all the unfinished wood you can see. (Figure 2) If you get some paint on the wire that's ok. You can wipe it with a rag now or



you can add dabs of brown and rust colored paint to the wire to give it a more weathered look.



When the paint is dried (heat guns are available to dry the paint faster) you want to take a sanding block and/or sandpaper and

gently sand randomly on the frame and box. (Figure 3) Now you want to add just a light touch of the varnish to make the wood look aged. Add a tiny bit to a damp rag. (Figure 4) The water will help dilute the varnish. You can also mix the varnish with water a head of time if you prefer. Then very lightly apply to the sanded areas. (Figure 5)

Now you can apply the varnish. Make sure you take a clean brush so you get a nice clean application. (Figure 6) When the varnish is dried you are going to secure the box to the frame. Run a bit of wood glue along the edge of the box on the back. Have your nails and hammer ready. Place the bottom front of the frame on top of the glued box. Hammer the nails in making sure you stay within the wood frame of the box. (Figure 7) Nail in all three nails.

If you're putting on embellishments or other decorative elements, heat up the hot glue gun and use to adhere the items. (Figure 8) Just remember the glue is hot and can burn. Be careful when using.

Now you have your wonderful rustic shelf which can sit on your counter or mantel but is secure enough to hang on the wall. Enjoy!

Thank you for creating with us!

firefly
OPEN ART STUDIO

